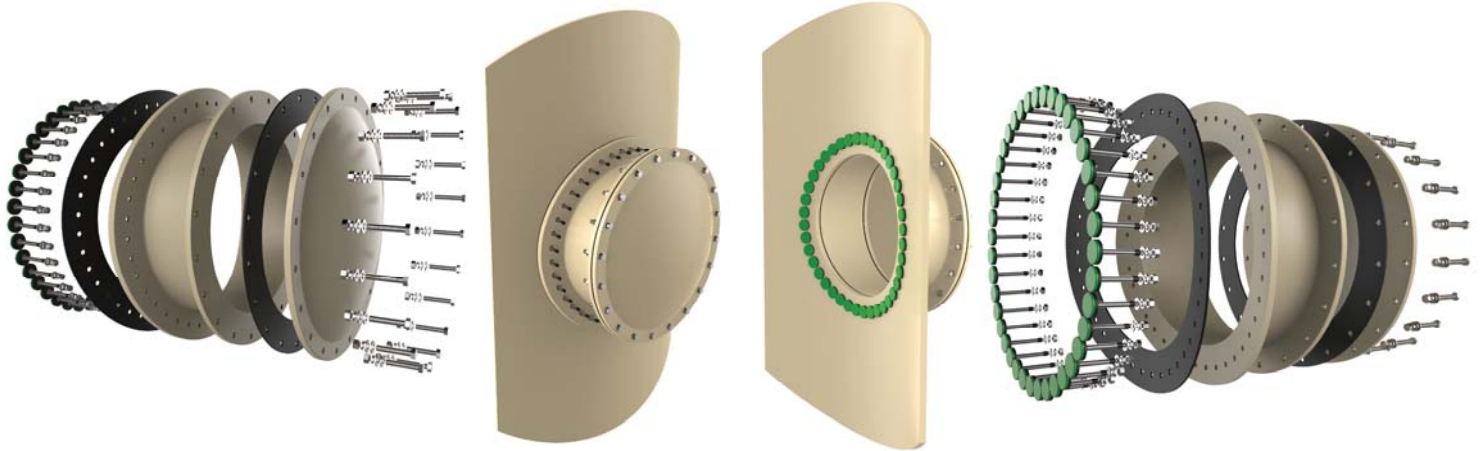




Side Manways



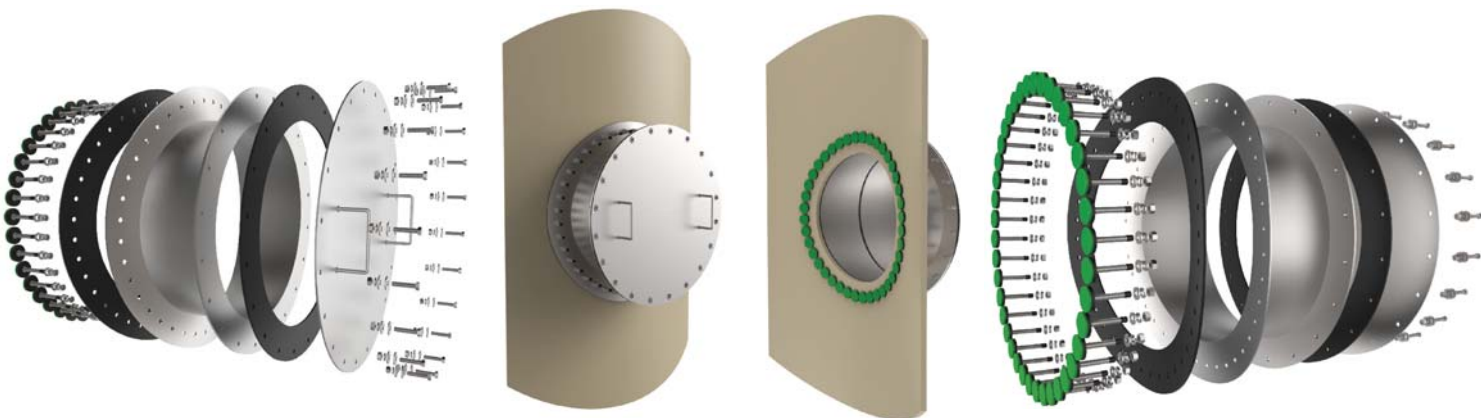
24" Radiused-Saddle **Fiberglass** Side Manways

The Challenge

When it comes to tank inspection, cleanout and maintenance, there's no safer or more practical tank feature than a side manway. Until now, if stainless steel was not compatible with the chemical being stored, side manway options were limited and unappealing; expensive alloys or access your tank from or through the top manway. The safety and performance of your poly tank was substantially impacted.

The Solution

Our innovative radiused-saddle manways bring the performance advantages and safety of side entry access to your poly tanks. The key to the success of our manways is the elimination of stress, on the tank and on the fitting. Just choose from our wide selection of material choices to supercharge your tank's performance. Our fiberglass side manways have been granted U.S. Patent no. 9,464,745. *We will provide the best performance, value and service to meet your tank accessory requirements, period.*



24" Radiused-Saddle **Stainless Steel** Side Manways